

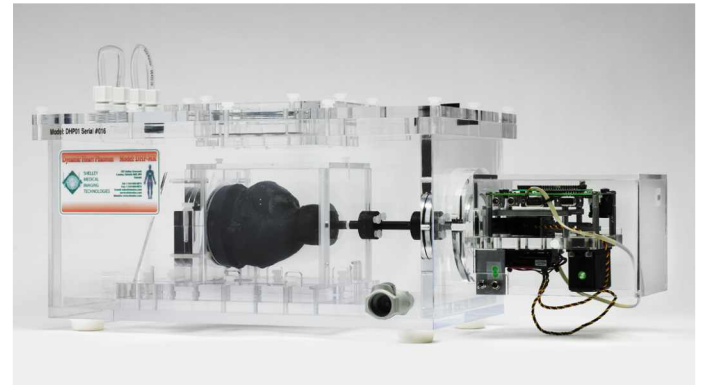


## MRI Compatible Multi-Modality Heart Motion Phantom



Model: DHP-MRI

## Ultrasound & CT Compatible Multi-Modality Heart Motion Phantom



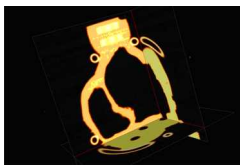
Model: DHP-01

*Ideal for imaging dynamic cardiac structure, cardiac function and image guidance.*

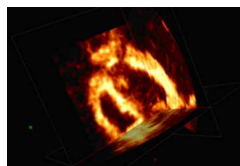
The MRI compatible multi-modality heart motion phantom (Model: DHP-MRI) features; pneumatic control, an MRI & CT compatible tissue equivalent heart, a versatile acrylic tank and heart motion control software. To achieve ultrasound compatibility the Model: PVAH-01 tissue equivalent heart would be required. [Replace the Model: PVAH-MRI tissue equivalent heart with the PVAH-01 tissue equivalent heart for ultrasound applications.]

The ultrasound & CT compatible multi-modality heart motion phantom (DHP-01) features; dual servo control, an ultrasound & CT compatible PVA heart, a versatile acrylic tank and heart motion control software. Designed for apical and transesophageal imaging views.

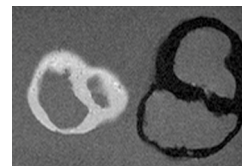
The acrylic tank design provides access for fluid flow tubing to be connected to each ventricle, for catheter related devices to be introduced, as well as special ports for a transesophageal probe to be positioned beneath the heart.



Tri-planar rendering through one phase of a dynamic 3D CT scan of the heart phantom.



Tri-planar rendering through one phase of a dynamic 3D US scan of the heart phantom.



T1 weighted spin-echo sequence of two heart phantoms illustrating control of the MR relaxation parameters of myocardium.

## Product Description

Shelley's dynamic multi-modality anthropomorphic heart phantom is ideal for sophisticated analysis and validation of cardiac motion techniques related to the medical imaging.

The dynamic human heart replica is made of a hydrogel material that realistically mimics the biomechanical properties (elasticity) of human soft tissue and incorporates anatomically correct left and right ventricle structures for imaging under ultrasound, CT, X-ray and MRI. The hydrogel is doped with contrast materials to mimic soft tissue under ultrasound, CT, x-ray and MR imaging.

User-friendly software, precise dual motion control and an actuator are connected to the hydrogel heart phantom allowing for independent control of compression, stretching and torsion motion of tissue deformation. The flexible motion control software allows users to easily program and execute sophisticated cardiac motion events, including RR intervals and arrhythmia. ECG signals can be input to drive/synchronize the timing of the heart contraction.

## Applications

The phantom is designed for a wide range of development & validation studies in cardiac imaging, including:

- image processing: segmentation and visualization algorithms, real-time processing, morphological and anatomical characterization
- dynamic multi-modality and intra-modality image registration and fusion involving ultrasound, CT, x-ray & MR
- elastography: strain estimation, deformation tracking and tissue tagging acquisition and analysis
- dynamic, real-time, and motion-compensated data collection and reconstruction algorithms
- interventional device navigation: position & orientation
- characterization and correction of cardiac motion artifacts



## Features

- 3D data available for left and right ventricles
- Left and right ventricular anatomy
- Realistic biomechanical properties
- Multi-modality compatibility
- Realistic cardiac motion
- Programmable, including arrhythmia
- ECG signal input to drive the timing of the contraction
- Simulation of regular and time varying RR intervals
- Acoustic window for multi-angle ultrasound imaging
- Standardized ventricle IN & OUT ports for fluid and device access
- Apical and transesophageal imaging views
- Coronary tubing

## Benefits

- Perform multi-modality experiments / assessments.
- Makes 3D cardiac modeling and multi-modality imaging development, that require a great deal of testing and re-testing in the lab, easier by using a realistic dynamic phantom.
- Reproduce realistic cardiac motion helps to develop and test novel reconstruction and acquisition techniques and in order to get the best possible image quality.
- Allows control of cardiac rate and variability to test against sources of artifacts in a controlled manner.
- A very cost effective tool for shortening the research and development cycle when designing new methods for image based diagnostics and interventions.
- Increase the pace and productivity of your medical imaging research projects.
- Reduces reliance on animal studies and human volunteers.

## Specifications / Requirements

### Hydrogel heart specifications

PVA moulded construction  
Left ventricle volume, 76 ml  
Right ventricle volume, 66 ml



Model: PVAH-MRI  
MRI & CT  
Compatible



Model: PVAH-01  
Ultrasound & CT  
Compatible



## Specifications / Requirements Con't.

### Motion specifications

Model: DHP-MRI

200 bpm  
41° rotation  
2.8 cm (1.1 inches) stroke

Model: DHP-01

88 bpm  
41° rotation  
2.8 cm (1.1 inches) stroke

### Controller specifications

VSA v4.0  
RAPU Manager Controller  
ASICC II Board  
2 HITEC servos; HS 6965HB;  
HS 815BB  
USB connection



Pneumatic Regulator  
for Model DHP-MRI

### Platform/Tank specifications

Tank/Reservoir O.D. Dimensions:

Length 47cm (18.5") x Width 24.1cm (9.5")  
Height 24.6cm (9.69")

Total length with controls is 67.8cm (26.7")  
Total Weight 15.9Kg (34.5Lbs.)

### Electrical specifications

110 Volt AC input  
5 volt 2.6 amp DC power supply  
5 Volt 3 amp DC power supply  
9 Volt battery (ASICC II Board)

### Computer system requirements

Windows ME/2000/XP/Vista with mouse  
(Windows 95/98 are not supported)  
USB 1.1/2.0 port  
SD/SDHC storage card

Patent Pending

SHELLEY MEDICAL IMAGING TECHNOLOGIES

Sales Office

157 Ashley Crescent, London, Ontario N6E 3P9 Canada  
Phone: 1 (519) 690-0874 Fax: 1 (519) 690-0875  
Email: bob.gravett@simutec.com Web: www.simutec.com

Service Centre

41 Coldwater Road, Toronto, Ontario M3B 1Y8 Canada  
Phone: 1 (416) 447-6471 Fax: 1 (416) 447-9313  
Email: service@simutec.com

A DIVISION OF SHELLEY AUTOMATION INC.