



SHELLEY
MEDICAL
IMAGING
TECHNOLOGIES

Sales Office

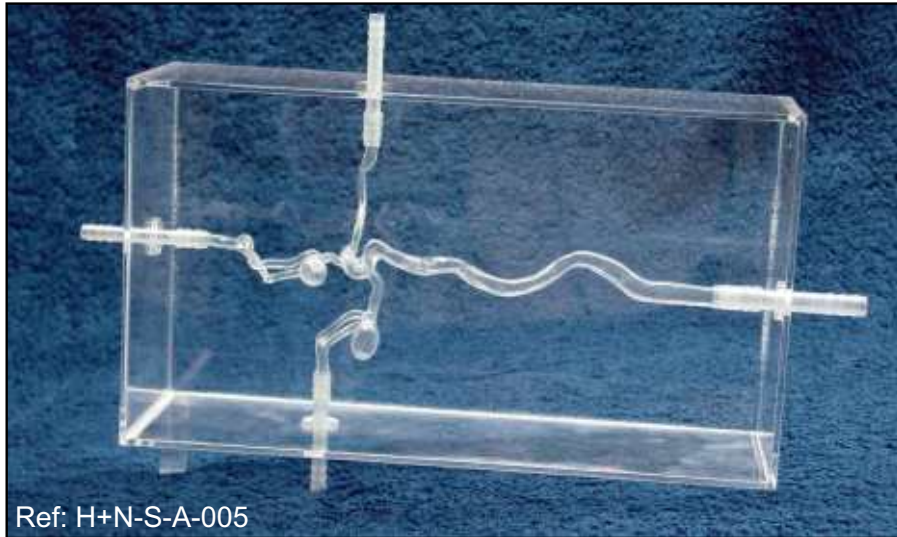
London, Ontario, Canada
Phone: 1 (519) 690-0874
Fax: 1 (519) 690-0875
Email: sales@simutec.com
Web: www.simutec.com

**WORLD LEADER
IN ANATOMICAL HUMAN
VASUCULAR REPLICAS**



REF: H+N-S-A-005 and H+N-S-A-006

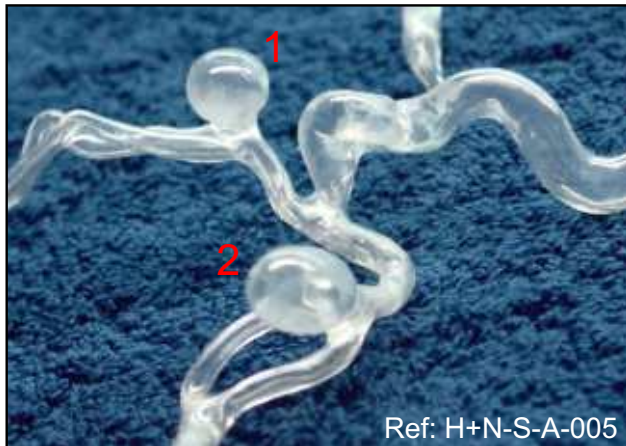
**RIGHT INTERNAL CAROTID ARTERY MODEL
WITH TWO ANEURYSMS**



Ref: H+N-S-A-005

Right internal carotid artery model with two aneurysms. Narrow neck for H+N-S-A-005, wide neck for H+N-S-A-006.

Our in vitro models respect human anatomy and are designed for the development and demonstration of stents, coils and catheters. They provide a realistic environment for the simulation of endovascular procedures, pre-surgery training purpose for interventionalists.



Ref: H+N-S-A-005

Narrow neck model.
Aneurysm #1 ϕ 10-11mm, neck 2.5x2.5mm
Aneurysm #2 ϕ 10mm, length 16.5mm, neck 3.5x4.5mm



Ref: H+N-S-A-006

Wide neck model.
Aneurysm #1 ϕ 10-11mm, neck 2.5x6.0mm
Aneurysm #2 ϕ 10mm, length 16.5mm, neck 3.5x8.0mm

These models are compatible with modern imaging modalities such as digital subtraction angiography, computed tomography and magnetic resonance imaging. Providing the use of an adequate circulating fluid, Doppler techniques can also be performed. The in vitro models transparency to light makes them suitable for video and photographic monitoring.