



SHELLEY
MEDICAL
IMAGING
TECHNOLOGIES

Sales Office

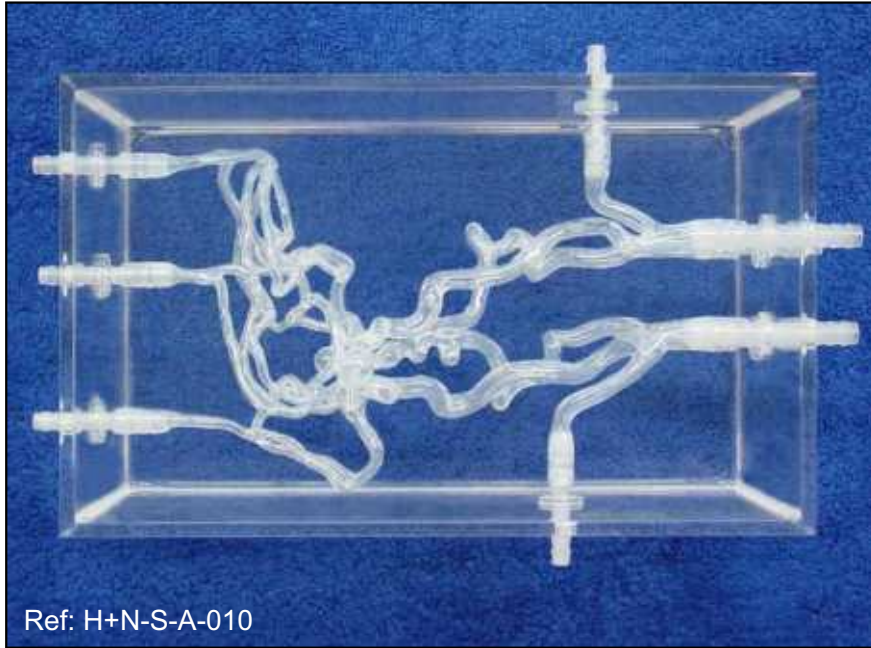
London, Ontario, Canada
Phone: 1 (519) 690-0874
Fax: 1 (519) 690-0875
Email: sales@simutech.com
Web: www.simutech.com

**WORLD LEADER
IN ANATOMICAL HUMAN
VASUCULAR REPLICAS**



REF: H+N-S-A-010 or H+N-S-N-010

**ANTERIOR AND POSTERIOR CIRCULATIONS MODEL
WITH OR WITHOUT ANTERIOR COMMUNICATING
ARTERY ANEURYSM**

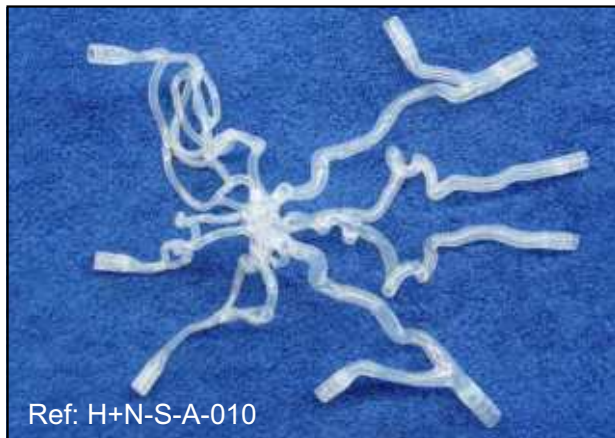


Ref: H+N-S-A-010

The picture on the left shows our modified H+N-R-A-002 model in its soft version with 6 aneurysms added to its network of arteries for evaluation purposes.

Aneurysm and stenoses placements can be customized to suit your individual needs.

Asymmetry of A1 segments is known as a predisposing factor for the development of saccular aneurysms in clinical practice. The presence of this variant in the in vitro model adds to the realism of the aneurysmal disease simulation.



Ref: H+N-S-A-010



Ref: H+N-S-A-010

Our in vitro models respect human anatomy and provide a realistic environment for the development of new products, the simulation of endovascular procedures, pre surgery training, studies and teaching purposes.

These models are compatible with modern imaging modalities such as digital subtraction angiography, computed tomography and magnetic resonance imaging. Providing the use of an adequate circulating fluid, Doppler techniques can also be performed. The in vitro models transparency to light makes them suitable for video and photographic monitoring.