



SHELLEY  
MEDICAL  
IMAGING  
TECHNOLOGIES

*Sales Office*

London, Ontario, Canada

Phone: 1 (519) 690-0874

Fax: 1 (519) 690-0875

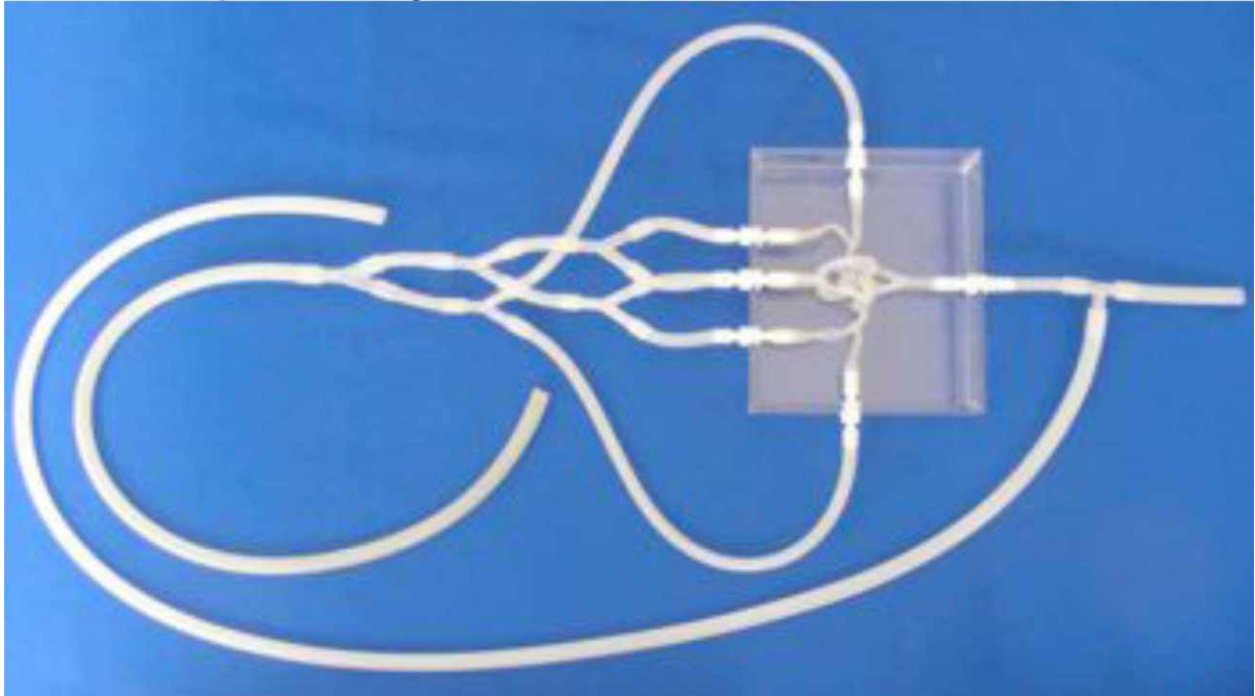
Email: [sales@simutec.com](mailto:sales@simutec.com)

Web: [www.simutec.com](http://www.simutec.com)

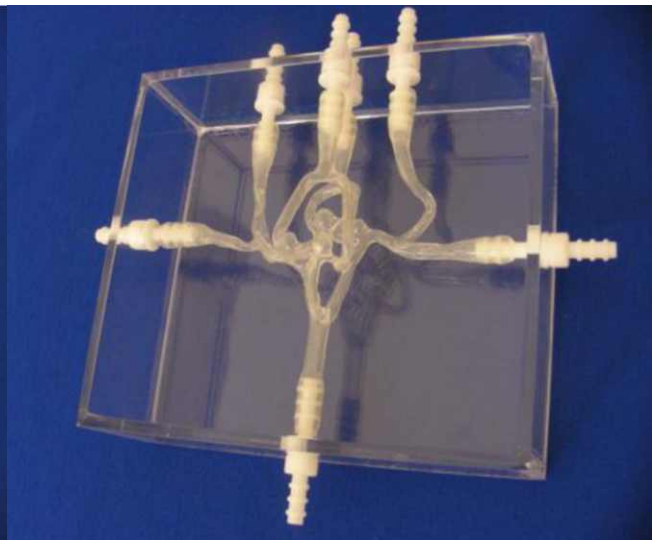
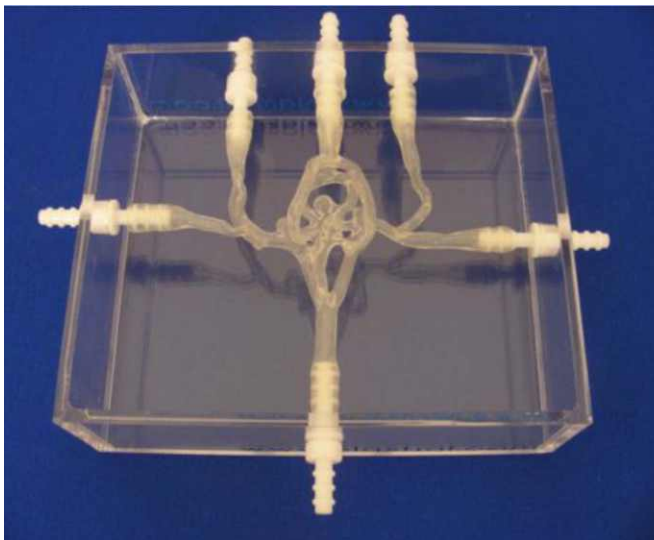
WORLD LEADER  
IN ANATOMICAL HUMAN  
VASUCULAR REPLICAS



**Circle of Willis training model with/without aneurysms**  
**Model: H+N-S-A-103 or H+N-S-N-103**



This aneurysm model is used for stent and coil training.  
External dimensions of the box: 18cm x 15.5cm x 5.5cm





S H E L L E Y  
M E D I C A L  
I M A G I N G  
T E C H N O L O G I E S

*Sales Office*

London, Ontario, Canada

Phone: 1 (519) 690-0874

Fax: 1 (519) 690-0875

Email: [sales@simutech.com](mailto:sales@simutech.com)

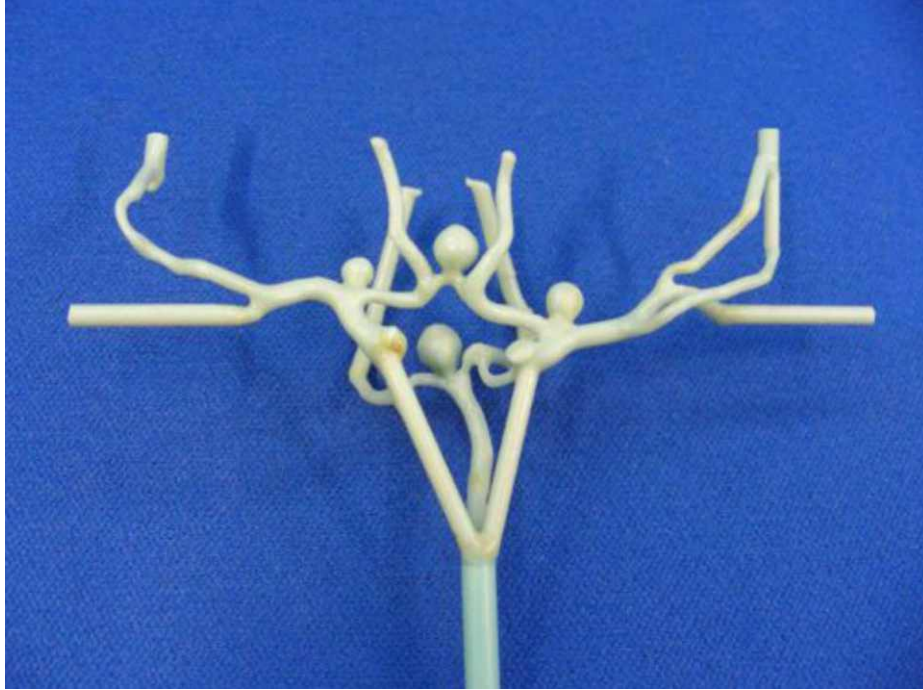
Web: [www.simutech.com](http://www.simutech.com)

**WORLD LEADER**  
**IN ANATOMICAL HUMAN**  
**VASUCULAR REPLICAS**

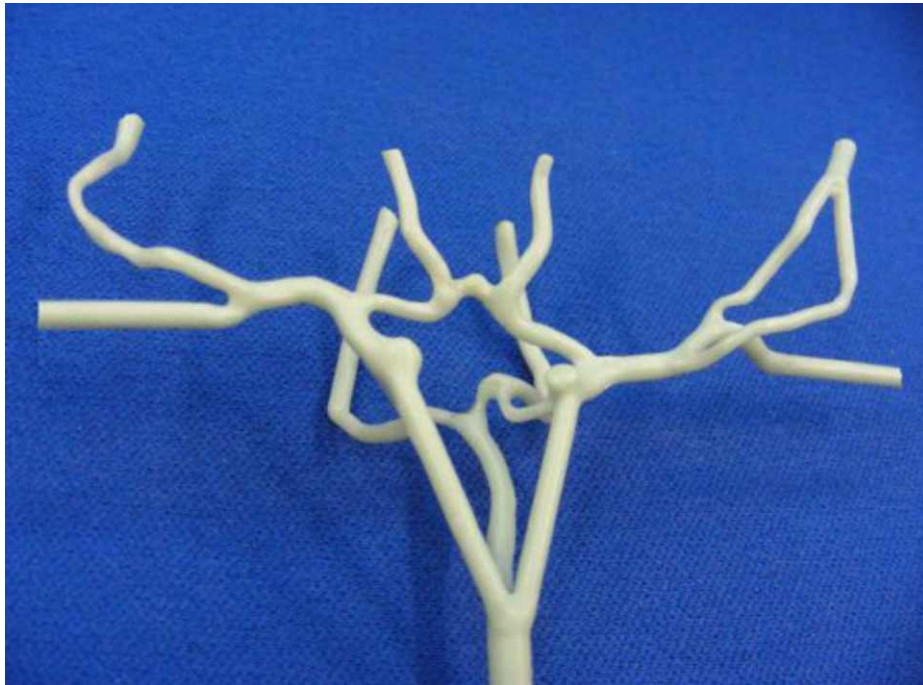


**Circle of Willis training model: H+N-S-A-103 (with aneurysms)**

Model core with aneurysms, Model: H+N-S-A-103



Model core without aneurysms, Model: H+N-S-N-103





S H E L L E Y  
M E D I C A L  
I M A G I N G  
T E C H N O L O G I E S

*Sales Office*

London, Ontario, Canada

Phone: 1 (519) 690-0874

Fax: 1 (519) 690-0875

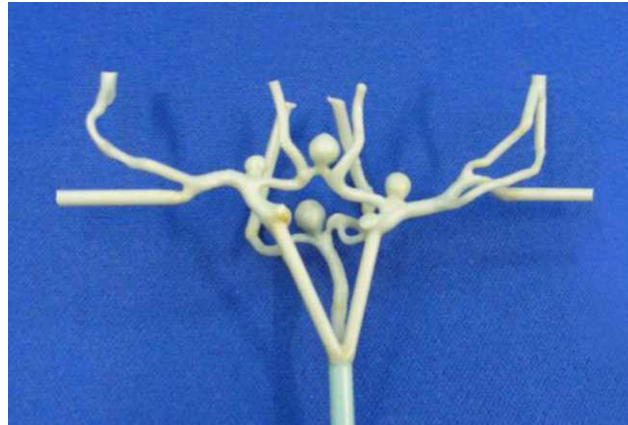
Email: [sales@simutec.com](mailto:sales@simutec.com)

Web: [www.simutec.com](http://www.simutec.com)

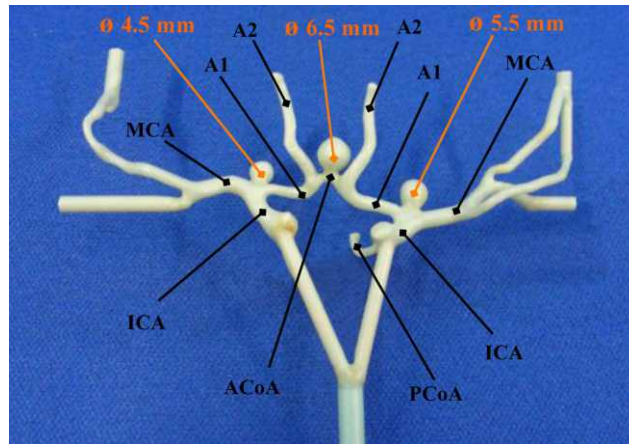
WORLD LEADER  
IN ANATOMICAL HUMAN  
VASUCULAR REPLICAS



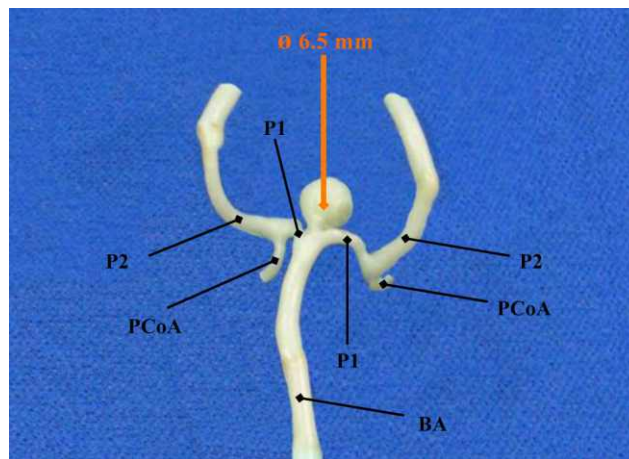
**Circle of Willis training model: H+N-S-A-103, Front view**



Back view



Aneurysm isolated



These models are compatible with modern imaging modalities such as digital subtraction angiography, computed tomography and magnetic resonance imaging. Providing the use of an adequate circulating fluid, Doppler techniques can also be performed. The in vitro models transparency to light makes them suitable for video and photographic monitoring.