



SHELLEY
MEDICAL
IMAGING
TECHNOLOGIES

Sales Office
London, Ontario, Canada
Phone: 1 (519) 690-0874
Fax: 1 (519) 690-0875
Email: sales@simutec.com
Web: www.simutec.com

WORLD LEADER
IN ANATOMICAL HUMAN
VASUCULAR REPLICAS



TWO LEG ARTERY MODEL

REF: L-P-S-L+R-002 / L-F-S-L+R-002 / L-A-S-L+R-002

The complete LEFT and RIGHT legs model includes the following arteries: descending aorta, both Iliacs, common and superficial femorals, poplitea arteries, peroneal, anterior and posterior tibial arteries.

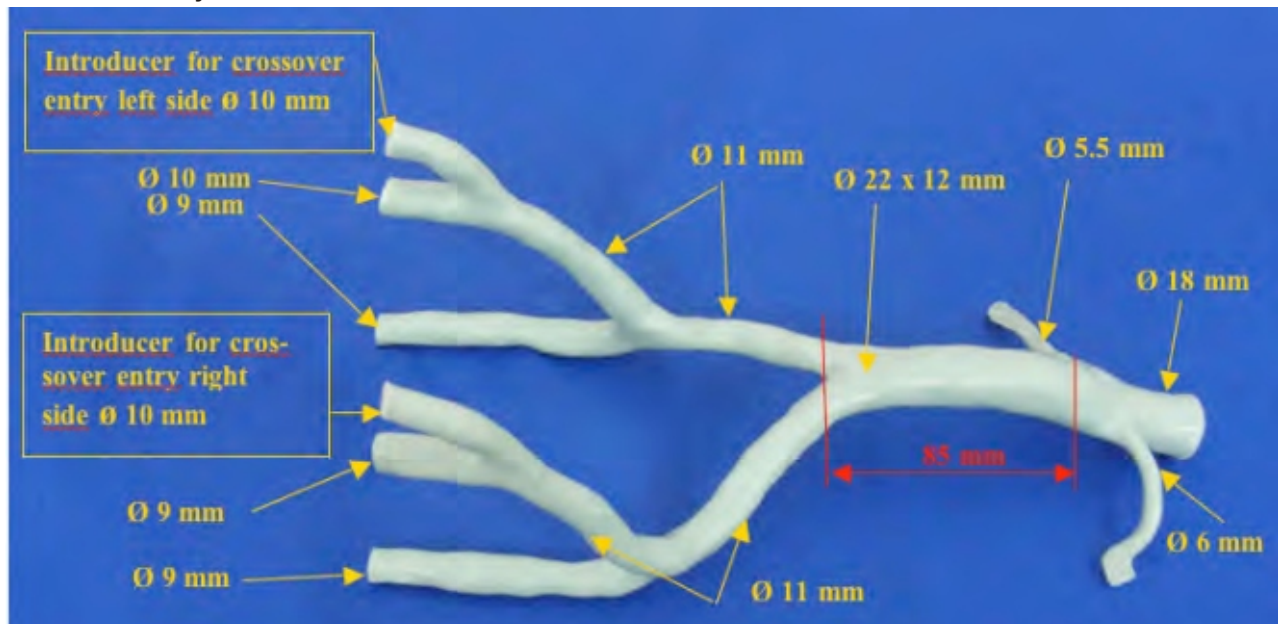


References : L-P-S-L+R-002 = Lower limbs L-F-S-L+R-002 = Upper limbs L-A-S-L+R-002 = Abdominal

This complete anatomical two leg artery model is used in the development and validation of new devices, to educate and train physicians and for demonstrating manufacturers devices.

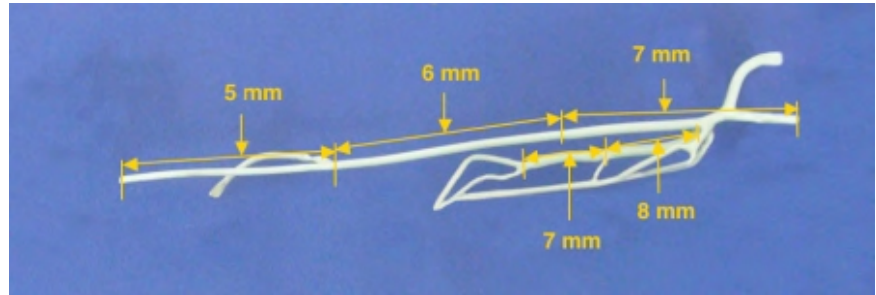
Two people can train with this model at the same time, with each leg offering different vessel diameters. Four percutaneous introducers (two for each leg) have been developed to simulate the needle puncture through the skin. Cross over use with an antegrade or retrograde approach.

Abdominal artery : Ref L-A-S-L+R-002



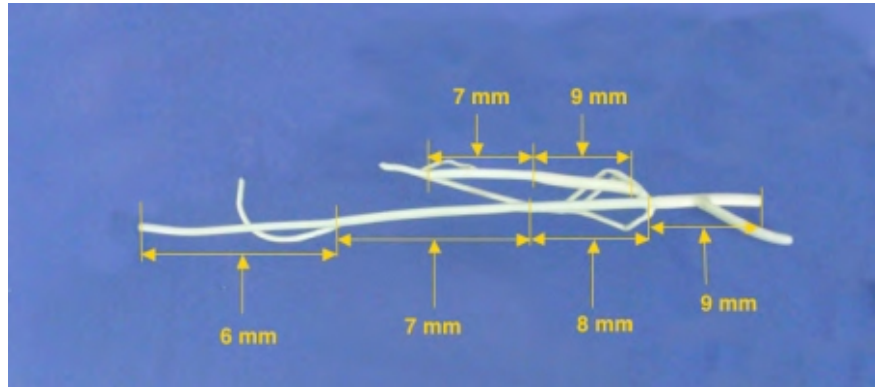
LEFT Femoral artery :
Ref L-F-S-Left-002

Approximate diameter measurements in millimeters.



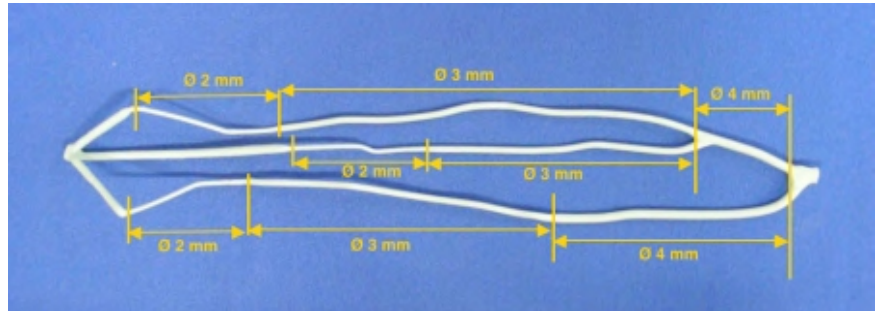
RIGHT Femoral artery :
Ref L-F-S-Right-002

Approximate diameter measurements in millimeters.



LEFT Poplitea artery :
Ref L-P-S-Left-002

Approximate diameter measurements in millimeters.



RIGHT Poplitea artery :
Ref L-P-S-Right-002

Approximate diameter measurements in millimeters.

