



## Product Description

The PhysioPulse 100 Flow System is designed to generate realistic, accurate and repeatable physiological volume flow waveforms. The system is pre-programmed with waveforms and allows for the downloading of user-defined flow waveforms. Volume flow waveforms are downloaded via a USB port.

The PhysioPulse 100 Flow System offers a flow range of 1.0 to 100 ml/s. Each system is calibrated and accompanied with a certificate of calibration specifying the calibration results at relevant flow rate intervals, as well as a calibration constant to verify the pump system accuracy.

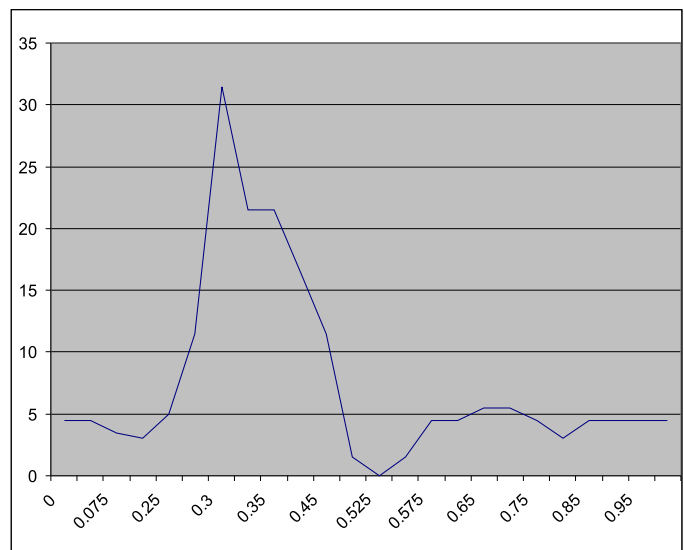
## Applications

Scientific research, new technology development and new product testing that requires reliable, accurate and repeatable pulsatile and constant flow waveforms for ultrasound, computed tomography and endovascular device flow applications.

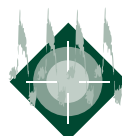
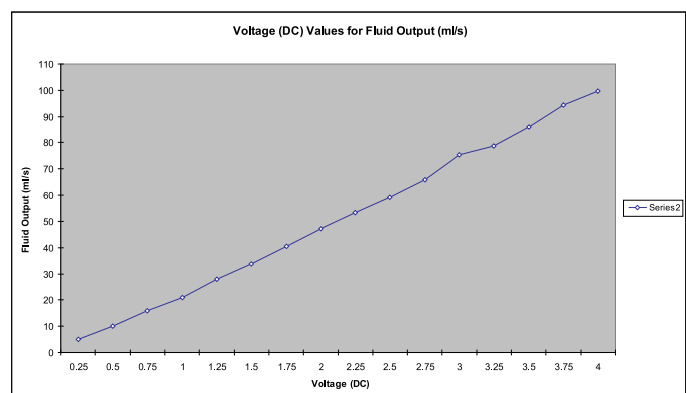
## Product Features

- Flow range of 1.0 to 100 ml/s.
- Realistic physiological volume flow waveforms.
- Pulsatile and constant flow waveforms.
- Reproducible waveforms.
- Programmable waveforms.
- Proprietary embedded physiological flow waveforms.
- User-defined waveforms can be downloaded.
- Calibration certificate.
- USB connection to download user-defined waveforms.

## Aorta Waveform



## Voltage (DC) Values for Fluid Output (ml/s)





## *Fluid Flow Specifications*

Volume Flow Range 1.0 - 100 mL/s  
Sine Waves of up to 1.5 Hz  
Physiological flow waveforms excluding reverse flow

## *Mechanical Specifications*

High-torque servo-motor  
Gear Box with 5:1 Ratio  
Gear Pump  
Self-Sealing 5/8" inner diameter plastic connectors

## *Computer Control*

Functional USB Port for user supplied computer

## *Interface Options*

User Supplied Computer, Monitor, keyboard and Mouse  
TracerDAQ Interface Software

## *File Format*

Waveform data is stored on the user's computer  
Waveforms can be looped continuously

## *Electrical*

115 VAC, 50/60 Hz, 6 Amp @ 120V  
1 USB Connection on Front Panel

## *Standard Calibration*

Flow Rate Sheet indicating the flow at different voltages

## *Physical*

Pump Unit Dimensions: 17" l. x 17 3/4" w. x 10 1/2" h.  
Pump Unit Weight: 60lbs. (27kg)  
Reservoir Capacity: 6 litres  
Circulating Fluid Volume: 1.5 litre minimum

## *Accessory Products*

Anatomically correct heart and vascular phantoms  
Blood mimicking fluids for; ultrasound, CT and endovascular applications.



SHELLEY MEDICAL IMAGING TECHNOLOGIES

### *Sales Office*

157 Ashley Crescent, London, Ontario N6E 3P9 Canada  
Phone: 1 (519) 690-0874 Fax: 1 (519) 690-0875  
Email: bob.gravett@simutec.com Web: www.simutec.com

### *Service Centre*

41 Coldwater Road, Toronto, Ontario M3B 1Y8 Canada  
Phone: 1 (416) 447-6471 Fax: 1 (416) 447-9313  
Email: service@simutec.com

A DIVISION OF SHELLEY AUTOMATION INC.