



S H E L L E Y
M E D I C A L
I M A G I N G
T E C H N O L O G I E S

Sales Office

London, Ontario, Canada

Phone: 1 (519) 690-0874

Fax: 1 (519) 690-0875

Email: sales@simutech.com

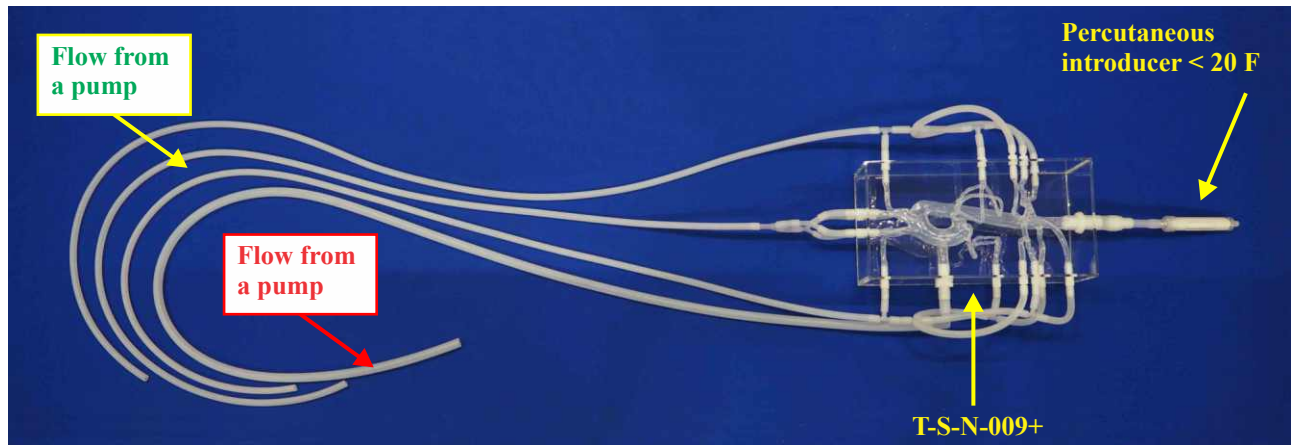
Web: www.simutech.com

WORLD LEADER
IN ANATOMICAL HUMAN
VASCULAR REPLICAS

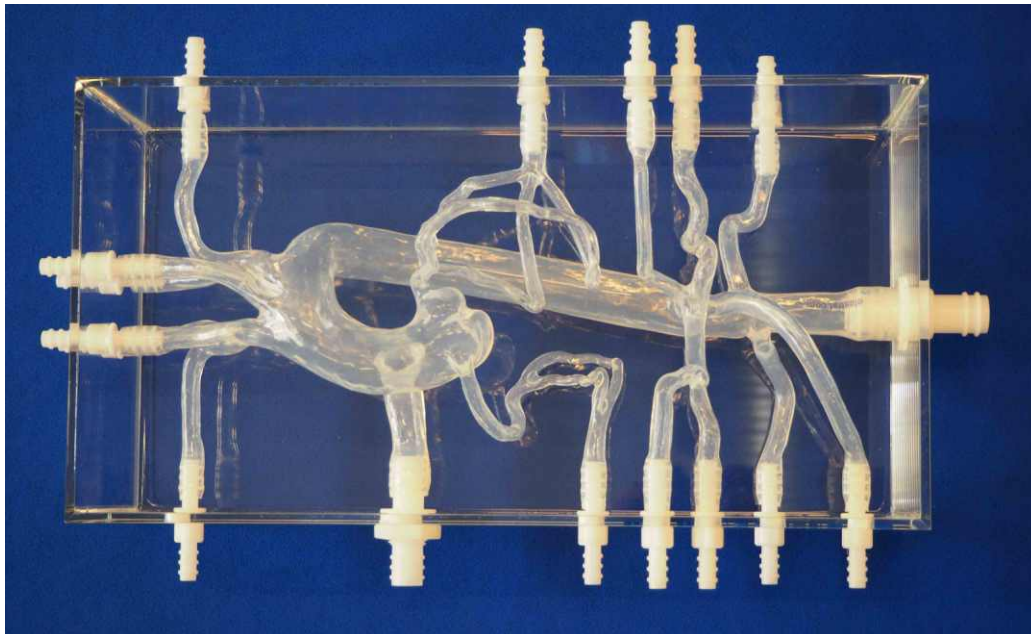


THORACIC MODEL: T-S-N-009+

Aortic Arch model with descending aorta, celiac trunk and renals



Size of the plexiglas box: L 420mm x W 220mm x 125mm



These models are compatible with modern imaging modalities such as digital subtraction angiography, computed tomography and magnetic resonance imaging. Providing the use of an adequate circulating fluid, Doppler techniques can also be performed. The in vitro models transparency to light makes them suitable for video and photographic monitoring.