



SHELLEY
MEDICAL
IMAGING
TECHNOLOGIES

Sales Office

London, Ontario, Canada

Phone: 1 (519) 690-0874

Fax: 1 (519) 690-0875

Email: sales@simutec.com

Web: www.simutec.com

WORLD LEADER
IN ANATOMICAL HUMAN
VASUCULAR REPLICAS



ANATOMICAL RIGHT HEART, VENOUS CIRCULATION

T-S-N-020+

Venous side of heart, core model:

Superior Vena Cava (SVC) and Inferior Vena Cava (IVC),

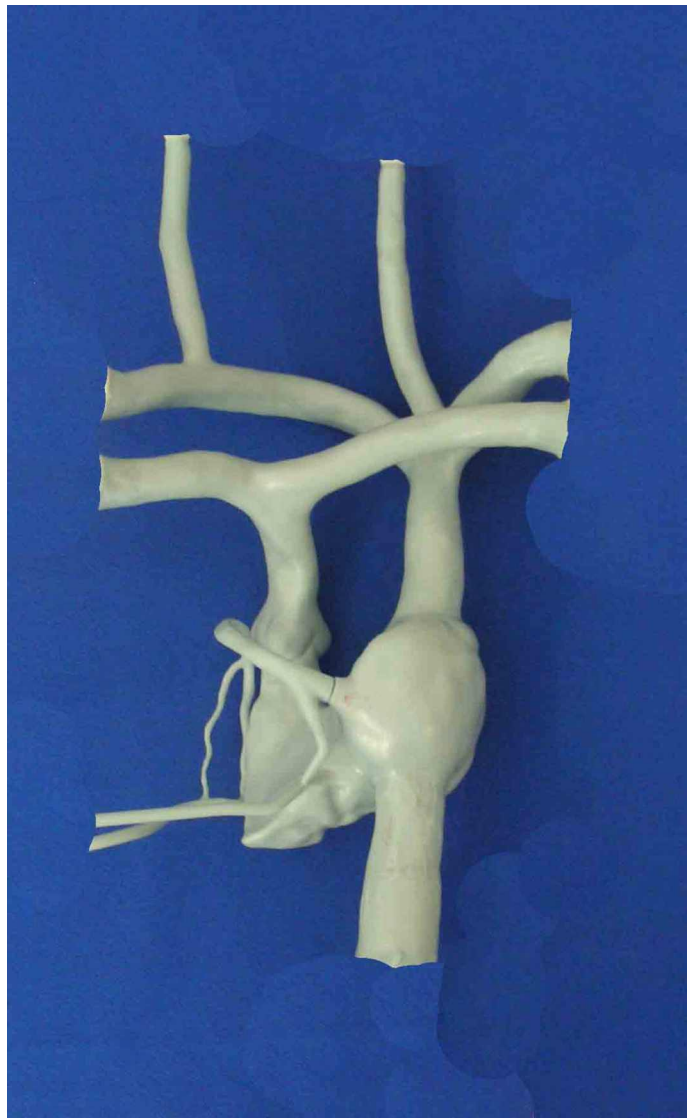
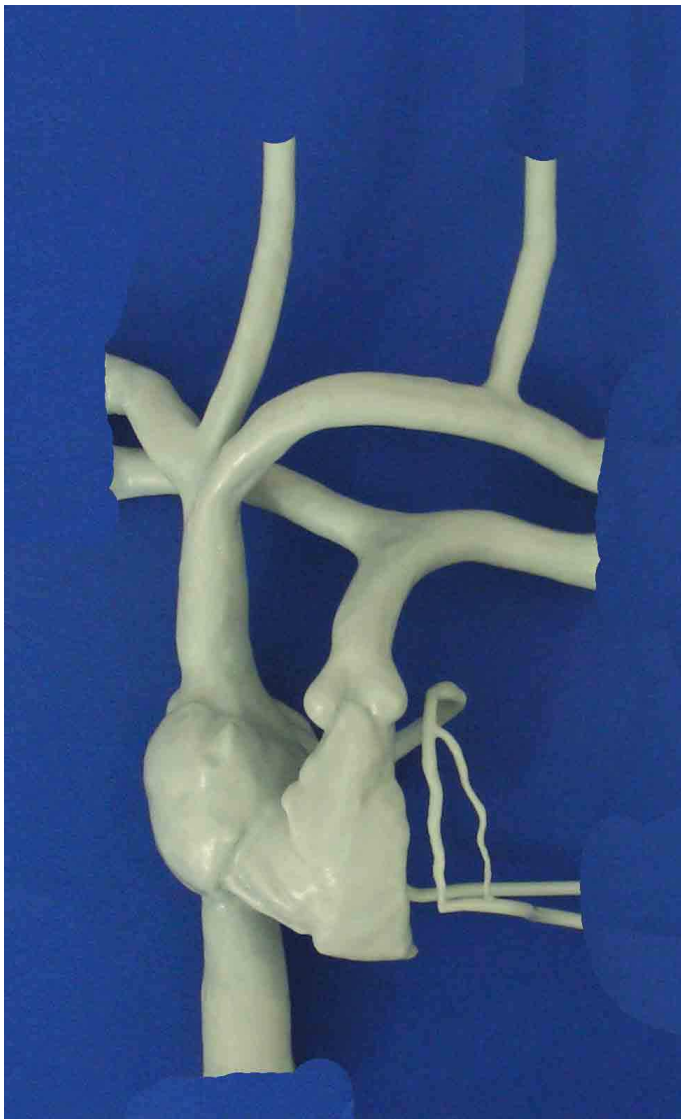
Right Atrium (RA)

Coronary sinus

Right ventricle

Pulmonary arteries

No cardiac valves in this model.



External dimensions of the Plexiglas box: L39 cm x W26.5 cm

These models are compatible with modern imaging modalities such as digital subtraction angiography, computed tomography and magnetic resonance imaging. Providing the use of an adequate circulating fluid, Doppler techniques can also be performed. The in vitro models transparency to light makes them suitable for video and photographic monitoring.



S H E L L E Y
M E D I C A L
I M A G I N G
T E C H N O L O G I E S

Sales Office

London, Ontario, Canada

Phone: 1 (519) 690-0874

Fax: 1 (519) 690-0875

Email: sales@simutec.com

Web: www.simutec.com

WORLD LEADER
IN ANATOMICAL HUMAN
VASUCULAR REPLICAS



Venous side of heart

These models are compatible with modern imaging modalities such as digital subtraction angiography, computed tomography and magnetic resonance imaging. Providing the use of an adequate circulating fluid, Doppler techniques can also be performed. The in vitro models transparency to light makes them suitable for video and photographic monitoring.